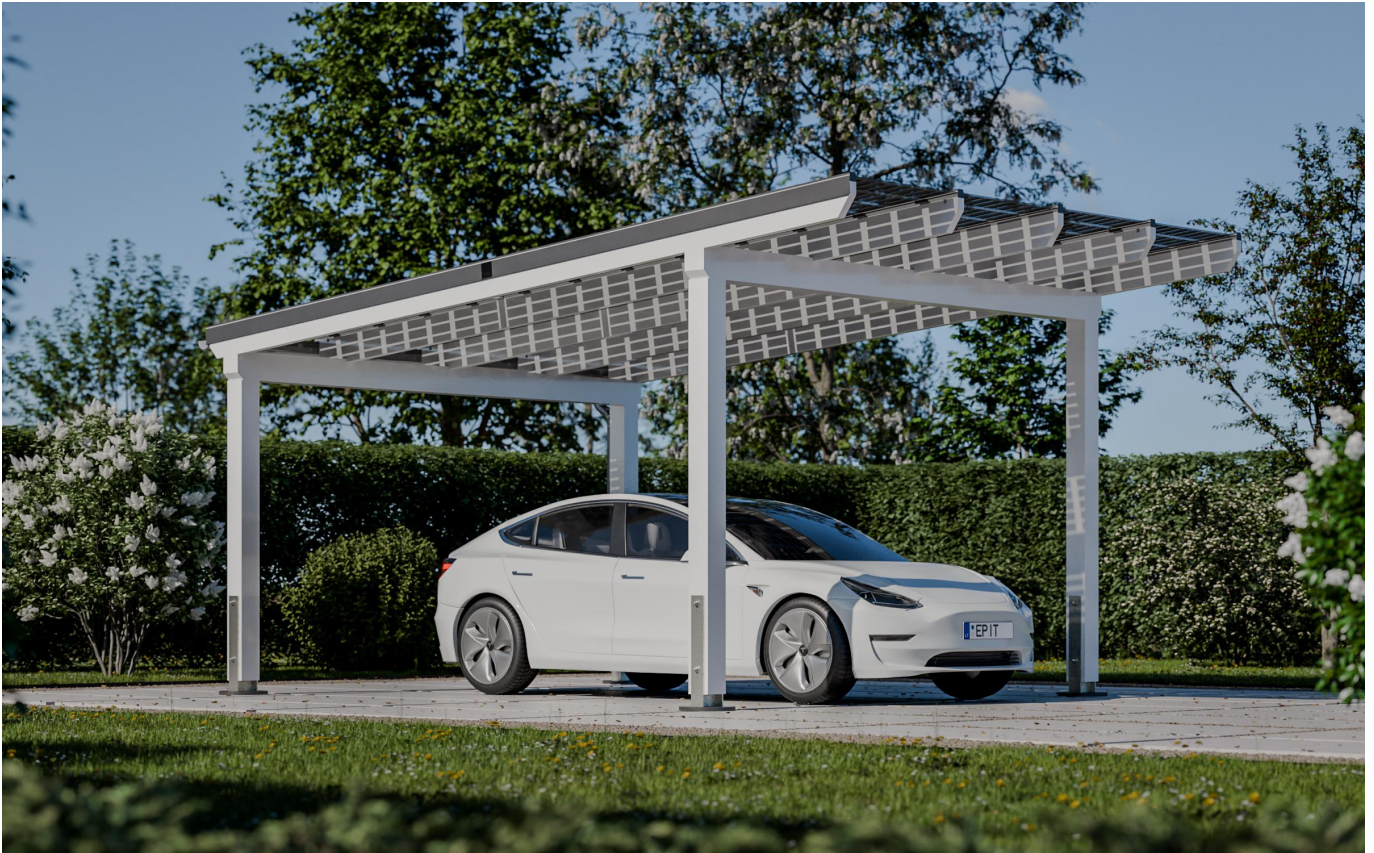


Carport "ePIT-H435-9T3-5-120"

Glulam construction with an integrated solar power system

Solar power capacity - 3,915 kWp

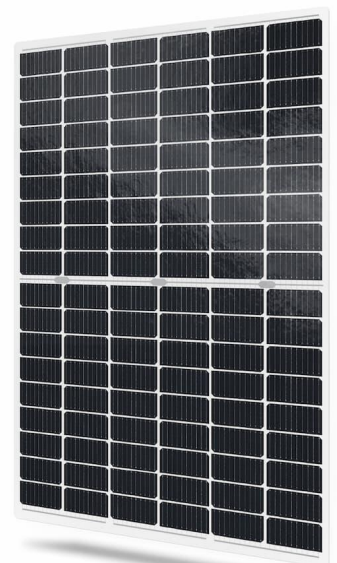


Carport "ePIT-H435-9T3-5-120"
(Dimensions: Width x Depth) 357x517 cm

Solar power capacity - 3,915 kWp

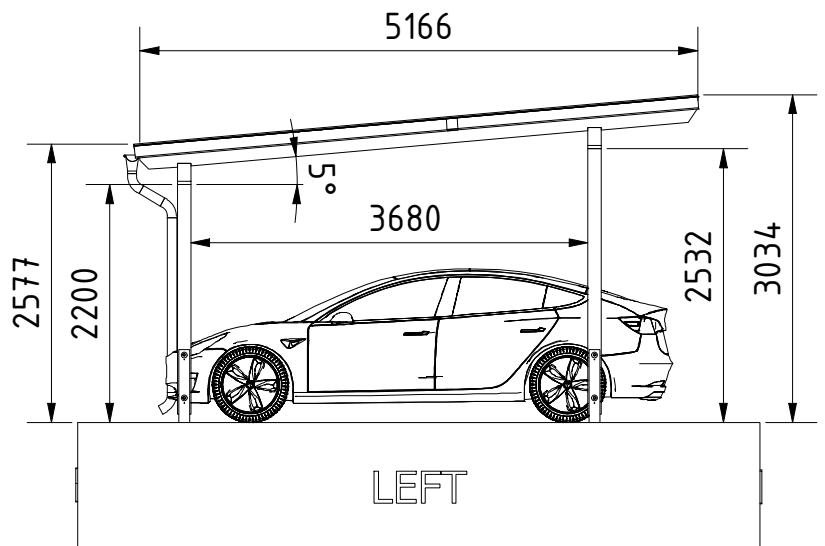
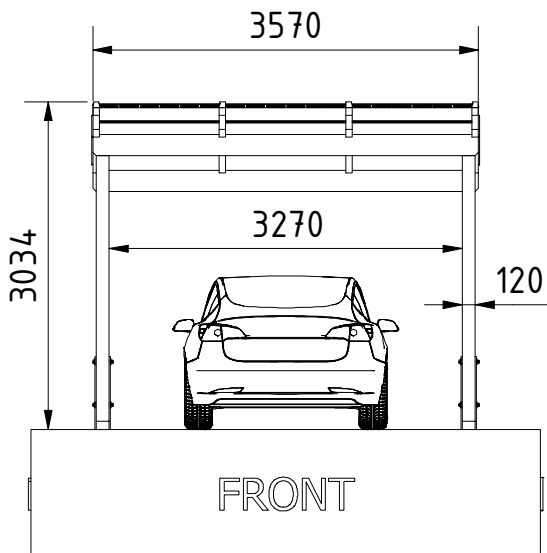
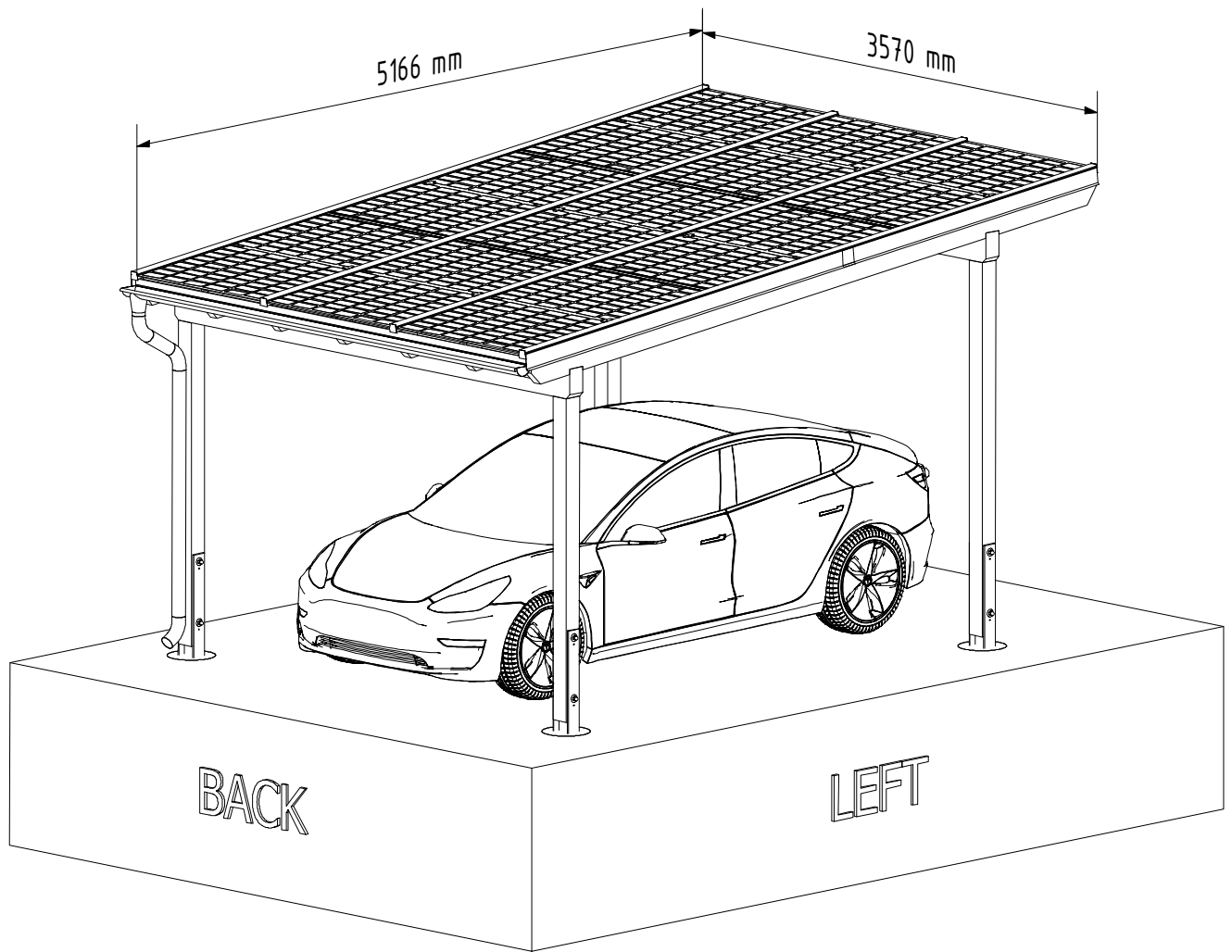
- Modern carport with integrated solar panels
- Distinctive design for contemporary homes
- Frameless transparent solar modules
- Higher power plant efficiency with dual-sided technology
- Glulam construction
- Triple-layer high-quality structural coating

Solar Panels
SOLID-B108-435W



Transparent, dual-sided, frameless
glass-glass solar modules

Carport "ePIT-H435-9T3-5-120"
(Dimensions: Width x Depth) 357x517 cm



Carport "ePIT-H435-9T3-5-120" 357x517 cm, White

Carport Specifications

Construction Material:	Glulam GL28h
Color*	White
Coating*	Triple-layer coating
Dimensions (Width x Depth mm)	3570x5166 mm
Depth between pole centers (foundation)*	3800 mm
Width between pole centers (foundation)	3390 mm
Total depth	5166 mm
Total width	3570 mm
Height at the front	3034 mm
Height at the rear	2577 mm
Entry height	2532 mm
Rear beam height*	2200 mm
Roof type	Single-pitch
Slope*	5°
Covering	Frameless solar panels (laminated glass-glass)
Roof panels color	Black cells - transparency 10%
Panels thickness	7,1 mm
Roof area	18,69 m2
Slope direction	Front to back
Overhang at the front *	896 mm
Overhang at the back *	350 mm
Overhang at the left side *	30 mm
Overhang at the right side *	30 mm
Coverage area	18,44 m2
Column size*	120x120 mm
Number of columns	4 pcs
Snow load (Sk)	1.6 kN/m2 (compliant with LT-EN1991-1-3)
Wind load m/s	32 m/s (compliant with LT-EN1991-1-4)
Installation type	Free-standing
Package weight	545 kg
Construction volume	51,7 m3
Article no.	ET395120380022002002002003502027

** - Parameters that can be changed*