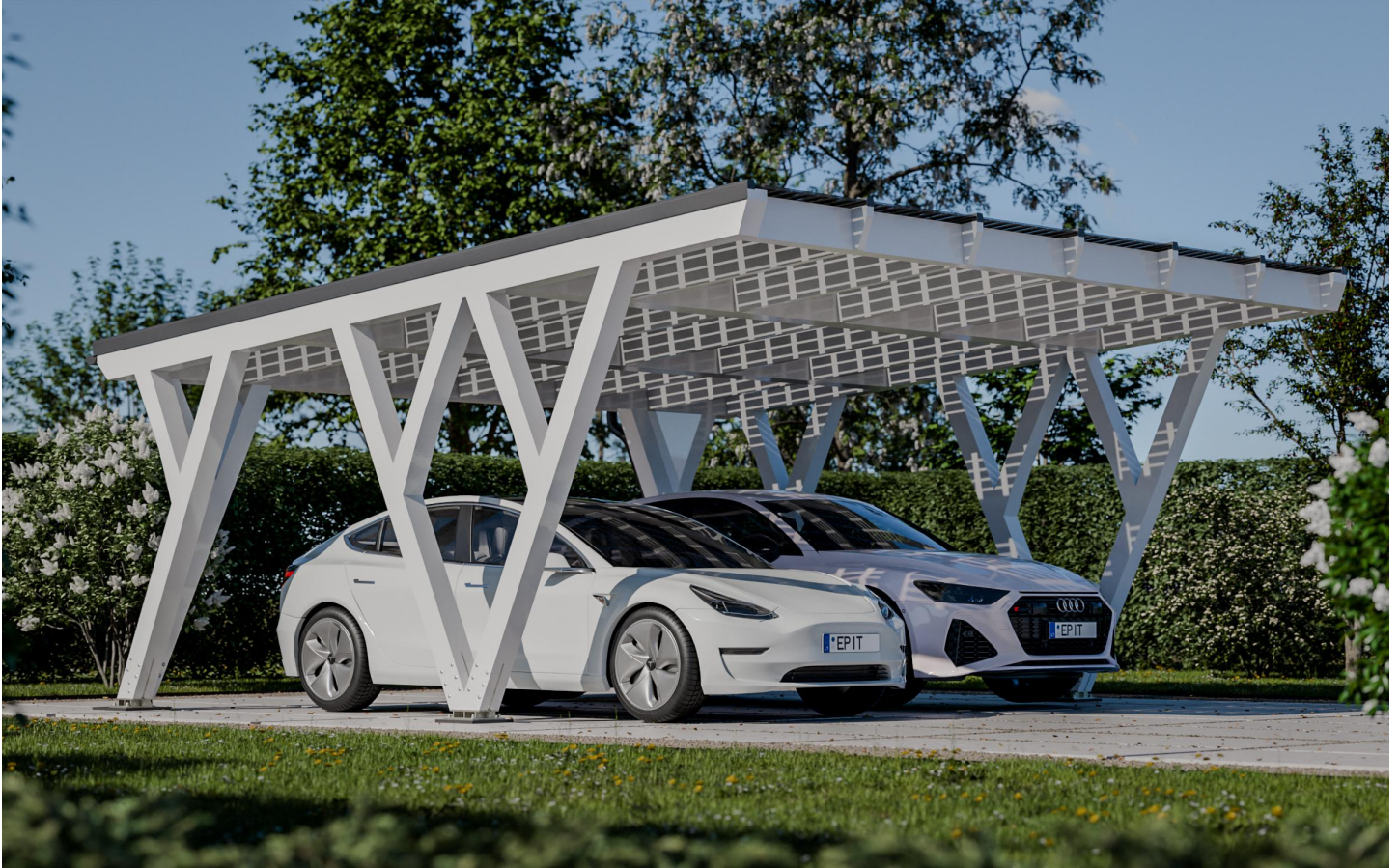


Carport "ePIT-H435-15V3-5-160"

Glulam construction with an integrated solar power system

Solar power capacity - 6,525 kWp

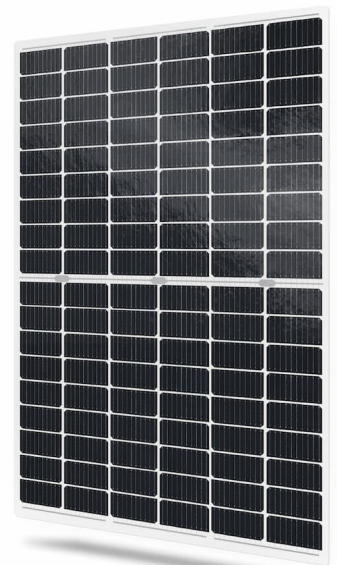


Carport "ePIT-H435-15V3-5-160"
(Dimensions: Width x Depth) 591x517 cm

Solar power capacity - 6,525 kWp

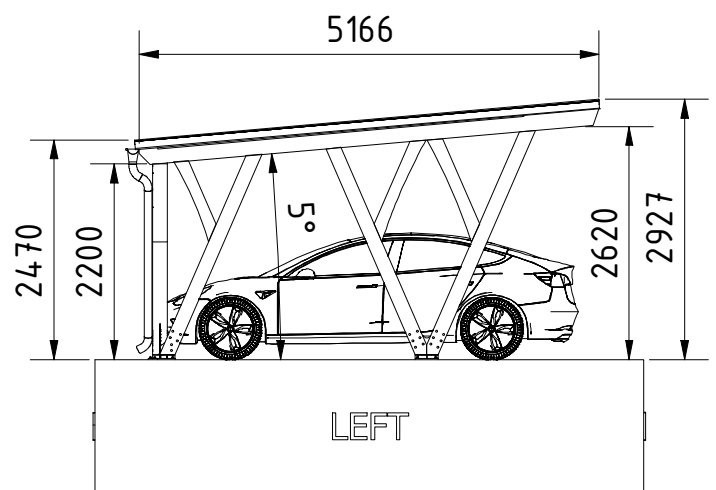
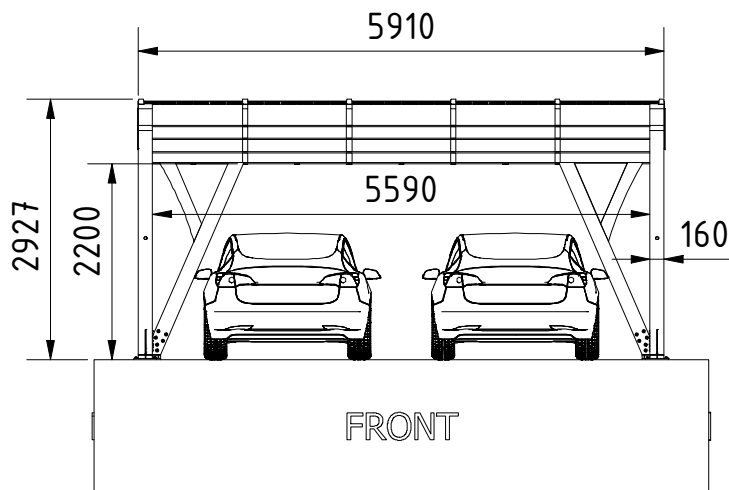
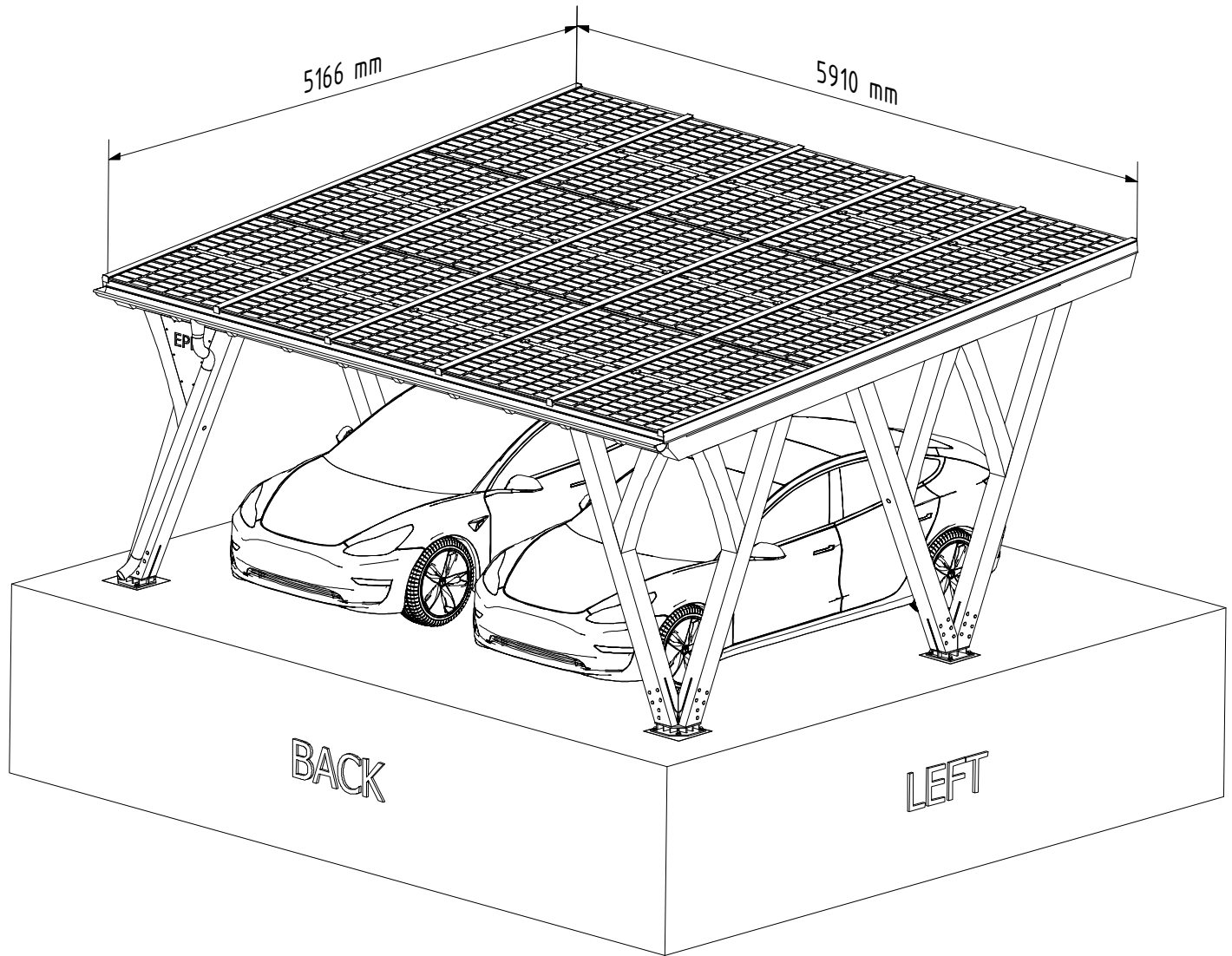
- Modern carport with integrated solar panels
- Distinctive design for contemporary homes
- Frameless transparent solar modules
- Higher power plant efficiency with dual-sided technology
- Glulam construction
- Triple-layer high-quality structural coating

Solar Panels
SOLID-B108-435W



Transparent, dual-sided, frameless
glass-glass solar modules

Carport "ePIT-H435-15V3-5-160"
(Dimensions: Width x Depth) 591x517 cm



Carport "ePIT-H435-15V3-5-160" 591x517 cm, White

Carport Specifications	
Construction Material:	Glulam GL28h
Color*	White
Coating*	Triple-layer coating
Dimensions (Width x Depth mm)	5910x5166 mm
Depth between pole centers (foundation)	2999 mm
Width between pole centers (foundation)	5750 mm
Total depth	5166 mm
Total width	5910 mm
Height at the front	2927 mm
Height at the rear	2470 mm
Entry height	2620 mm
Rear beam height*	2200 mm
Entry width	5590 mm
Roof type	Single-pitch
Slope*	5°
Covering	Frameless solar panels (laminated glass-glass)
Roof panels color	Black cells - transparency 10%
Panels thickness	7,1 mm
Roof area	30,94 m2
Slope direction	Front to back
Overhang at the back	150 mm
Coverage area	30,53 m2
Column size*	160x160 mm
Number of columns	8 pcs
Snow load (Sk)	1.6 kN/m2 (compliant with LT-EN1991-1-3)
Wind load m/s	32 m/s (compliant with LT-EN1991-1-4)
Installation type	Free-standing
Construction volume	82,39 m3
Packaging dimensions (LxBxH cm)	534cm x 106cm x 90cm
Packaging weight	1181 kg
Article number	EV3155160270022001325240471601601202027

** - Parameters that can be changed*